



The Stained Glass Windows Project



The 6Ps campaign. Patron HRH, Princess Anne, The Princess Royal
Charity No. 1163940

The Windows – Chancel and Lady Chapel

Holy Trinity Church has a striking collection of stained glass windows the first sight of which, on entering the church, is the glorious **East window** (1869) depicting events leading up to Christ's death and resurrection.

The double framed stone tracery of this window is quite unique: the eminent architect, William Burges, may well have had in mind the need to, at least, match the magnificence of the already existing 14th century tracery in the **Rose Window** in the Lady Chapel.



In the oldest part of the church, the **Rose Window** contains scenes from the life of Christ. The design and colour of the art work is magnificent and includes Noah's dove of peace at the heart of the Rose.



The glazing of the Victorian East window, the two windows either side of it in the Chancel, the Rose window and six smaller windows in the Lady Chapel is by the Hardman & Co. workshop, (1838-2008), pioneers of the stained glass revival of the nineteenth century.

The Windows – The Nave

The main body of the church is surrounded by eight beautiful and colourful works of art: four windows along the north wall and four along the south (town side). The four windows on the south are sequential telling the story of the Birth of Christ: 1. the Annunciation window depicting the Angel Gabriel's visit to the Virgin Mary; 2. The Adoration of the Shepherds; 3. The Worship of the Wise Men and 4. The presentation of the baby Jesus in the Temple with Simeon and Anna. The "Christmas story" told in glorious detail and colour.

The Victorian Windows in the Nave contain some amazing detail:

The Annunciation window depicts Mary's visitation with her kinswoman Elizabeth, also with child. The glazier, in this case Herbert W. Bryans, chose unusually to link this ancient Christian story to an English Parish Church, Holy Trinity, clearly identifiable in the background.



This delightful picture is from the fourth window on the south wall, 'The Presentation in the Temple' depicting a young boy with two turtle doves which, on the presentation of a new-born baby in the Temple, would be offered as a sacrifice "according to the Law of the Lord "a pair of turtle doves or two young pigeons" Luke 2: 24

Herbert W. Bryans, who was the brother of the Rector of Minchinhampton Rev E.L. Bryans (1896 to 1912), was the glazier for most of the windows in the nave. Whilst Edward Raymond Payne (1906 – 1991), who had his studio in Box village, was the glazier for the church's most recent window "The Fishers of Men". This Arts & Crafts window, located at the west end of the north wall, was commissioned in 1959 as a memorial to the Beale family.

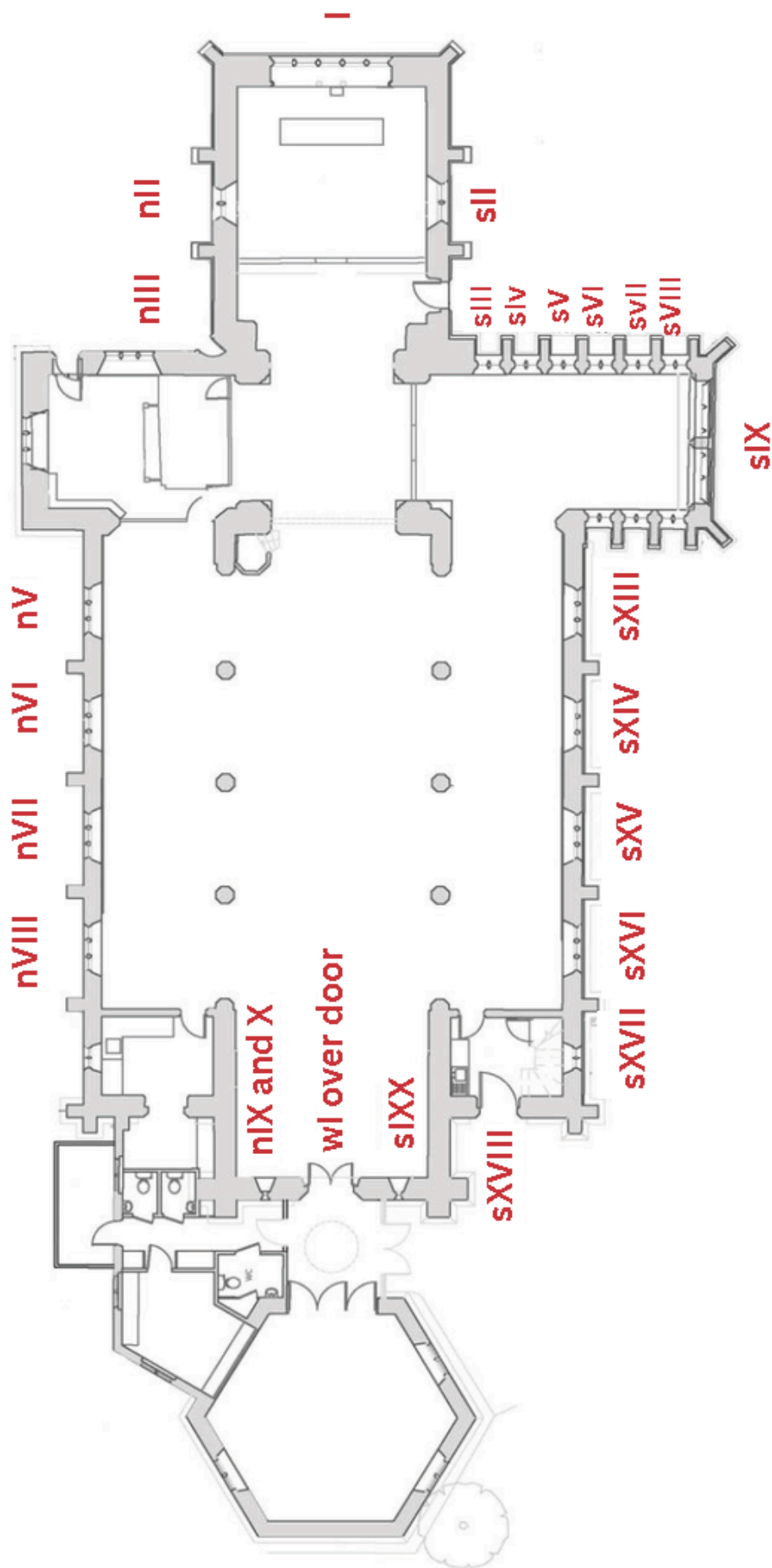


Again there is beautiful detail as seen in the magnified image above of 'Hyde Court', a family home. The house is situated at the bottom left side of the window with 'The Yews', another family home, on the right.

The great West window, dedicated in 1899, shows the four "Doctors" of the Western church: St. Ambrose; St. Jerome, St. Augustine of Hippo and St. Gregory the Great. Declared Doctors of the Church in 1298, they were powerful thinkers and teachers of the faith in the early centuries of the Church's life. All of the windows in the church are very dirty. This window is an example of one of the dirtiest: its beautiful colours disguised under the dirt of many years.



Plan of the church locating the windows



Drawing courtesy of St Ann's Gate Architects

The Chancel

- I** **The East Window:** below - events leading up to and the Crucifixion (St Luke) and above - Christ enthroned surrounded by angels, the Resurrection. Many details from the lower windows are lost but King David, St James and St Peter are there. Hardman 1869.
- sII** Four scenes from St John 20 & 21 on the Resurrection of Christ: Mary in the Garden; women discovering the empty tomb; Jesus with 'doubting' Thomas; Jesus with Simon Peter. Hardman 1877.
- nII** Scenes depicting Christ's parables: the lost coin (Luke 15); the lost sheep (Luke 15); the Sower (Luke 8); the Good Samaritan (Luke 10). Hardman 1877.

The Lady Chapel

On the **East wall** 6 windows depicting, in turn, stories from the Old and New Testaments.

Hardman **sIII** – **VI** 1889 – 93; **sVII** and **VIII** 1920.

- sIII** David protecting his sheep from the lion. 1 Samuel 17
Barnabas known for his good works and kindness. Acts 4.
- sIV** Hannah with young Samuel. 1 Samuel 1
Eunice with young Timothy. 2 Timothy 1.
- sV** Deborah, a Judge of Israel. Judges 4
Dorcas was known for her good works and beautiful needlework. Acts 9.
- sVI** Jonathan, son of Saul, friend to David and a warrior. 1 Samuel 20
St George, Patron Saint of England and an early Christian Martyr. Jonathan
- sVII** St Edmund, Martyr, King of East Anglia 855 and a martyr, Patron Saint of Torture Victims
St Oswald, King of Northumbria 634, Patron Saint of Soldiers. He died defending his Christian Kingdom.
- sVIII** St Chad, Bishop of Mercia, who introduced Christianity to the Mercian Kingdom. Prominent 7th century Anglo-Saxon Catholic Monk associated with the Venerable Bede. He died of the plague.
St Alban, first recorded Christian Martyr in Roman Britain who would not renounce his faith. Patron Saint of refugees.

sIX The Rose Window: the main scenes are from the life of Christ below and include his baptism, teaching the crowds and healing the sick. The circular shape of the 'rose' above consists of figures and female saints with Noah's Dove of peace at the heart. of the 'rose.' Hardman 1873.

The Nave

The four windows on the south side depict events related to Christ's birth: the 'Christmas' story.

sXIII The Annunciation window: the Angel Gabriel appears to Mary; Mary greets Elizabeth, her kinswoman, also with child with Holy Trinity church in the background. Luke 1. Herbert W. Bryans 1905

sXIV The birth of Jesus: adoration of the shepherds. Luke 2.8-20. Herbert W. Bryans 1903.

sXV The birth of Jesus: adoration of the Kings. Matthew 2.1-12. Herbert W. Bryans 1899.

sXVI The Christ child presented in the temple, welcomed by Simeon and Anna. Luke 2. 25-40. Herbert W Bryans 1908.

West end of the nave:

sIXX Martha of Bethany, who was anxious to serve. Sister of Mary & Lazarus who opened their home to Jesus. Luke 10. 38-42 & John 11. 1-43. Unknown glazier.

WI The four apostles, declared Doctors of the early church in 1298. St. Ambrose, Bishop of Milan 374 – 397, the Patron Saint of beekeepers. St. Jerome 347 - 420, a wealthy pagan, converted to Christianity. St Augustine, 354 – 430, a skilled preacher and prolific writer. He converted from a life of partying; which could be why he is the Patron Saint of brewers as well as theologians. St Gregory, 540 - 604 'the servant of all servants', the Patron Saint of musicians, singers, students & teachers. Bryans & John Wimbolt, 1899.

nIX Phoebe, meaning 'bright' and 'radiant', a deaconess in the Greek church. The inclusion of her name in Romans 16 is testimony to her character and valued role in the church. Unknown glazier.

The four windows on the north side.

- nVIII** 'Fishers of men', Matthew 4.19, Mark 1.17, Luke 5.10. A memorial to the Beale family depicting homes at Hyde Court and The Yews. Arts and Crafts window dated 1959 by Edward Payne.
- nVII** Isaiah, Jeremiah and Daniel, Old Testament prophets. Isaiah, eighth century BC, particularly known for his writings on the Suffering Servant. Jeremiah condemned the Israelites' worship of other gods and false images. A significant figure in the Judean Kingdom. Daniel, most famous for surviving a night in a lions' den, was very wise. He could interpret dreams. A memorial to the Baynes family. H. Vernon Spreadbury 1935.
- nVI** Saints Christopher, Agnes and Stephen. St Christopher, the Patron Saint of travellers, legend has it he unknowingly carried Christ as a boy across a river. Saint Agnes, the Patron Saint of girls, Girl Scouts and those seeking chastity and purity. She refused marriage, saying her only spouse was Jesus, for which she was martyred at the age of 13. St Stephen, 'a man full of God's grace and power,' a gifted speaker martyred for his beliefs. Acts 6 & 7 A memorial to Adela Lucy Ricardo. Herbert W. Bryans 1922.
- nV** Saints Aiden, Hilda and the Venerable Bede. St Aiden, an Irish monk, credited with converting the Anglo-Saxons to Christianity in Northumbria. St Hilda of Whitby, 614 – 680, Abbess founded a Monastery. Anglo-Saxon Kings looked to her for advice. The Venerable Bede, English monk, author and scholar. He died in 735 AD and is buried in Durham cathedral. A memorial to F.H.Playne. Herbert W. Bryans 1920.

The Windows Project

The repair, conservation and cleaning of the windows is the final piece of an ambitious reordering programme. The installation in 2018 of underfloor heating has enabled the maintenance of a constant temperature throughout the church, bringing recorded humidity levels of 80% to 90% down to a more appropriate 60% or below. A more stable physical environment, best suited to the conservation of a historic building and its beautiful stained glass windows has been established so we can safely move forward to rectifying the deterioration of the windows experienced over the last 100 years or more.

What are the problems?

The Hardman windows, in the Chancel and Lady chapel, in particular have suffered severe paint loss as a result of fluctuating temperatures, condensation and damp, not helped by a flaw in the original firing and accumulated dirt. Ghost images survive, despite the loss of detail in the faces of the people. A recent digital survey will enable graphic reconstructions to help to explain the stories.

Severe and ongoing paint loss



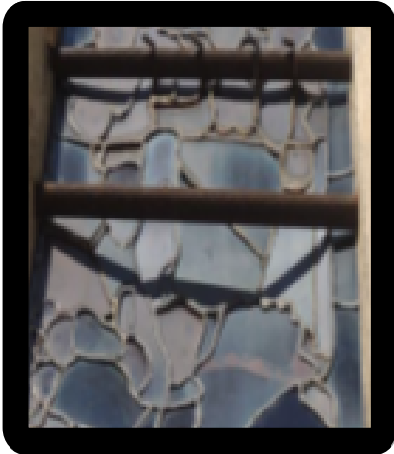
Accumulated dirt obscuring clarity & colour



Note the bright spot from clean testing

Problems shared by all of the windows but, most severely, seen in the Hardman Rose and East windows:

- Bowing and bending as the glass swells out and is displaced.
- Rusting of metal bars supporting the glass breaking up and staining the surrounding stonework.
- Rusting of the external iron saddle bars supporting the glass causing the masonry to break into smaller pieces. Replacement is needed with stainless steel.



Bowing of window
(weakened Lead)



Spalling of stonework
(rusting iron works)



Crumbling stone work
(rusting metal bars)

- Several of the windows have bowed and distorted seriously and need to be re-leaded and strengthened.
- Rust and, internally, water damage and condensation staining the walls and the 14th century tombs of Sir Peter de la Mere and his wife in the Lady Chapel. Specialist conservation cleaning is needed.
- All of the windows are very dirty and will benefit immensely from careful conservation cleaning in order not to lose their colour. The resulting light and colour will be stunning.

Stained glass windows have been a feature of Christian places of worship for centuries. They have been, if you like, teaching aids about the Christian faith in a world where most people used not to be able to read or write. This is a wonderful opportunity to tell the stories in the stained glass, to raise awareness of the scenes and to celebrate the characters, including special saints, depicted in the glass.

How are we doing it?

Specialist consultants for the conservation of the stained glass and the masonry will start work later in 2025. Our start date has to await the end of the nesting season for the Swifts, a protected species, nesting in the roof, and our fundraising.

How much will it cost?

Phase One: The Rose window

A priority: the digital close up survey revealed that it is in a much poorer state than originally assumed and is now at risk of glass being lost through crumbling masonry and rusting iron work.

Estimated cost inclusive of VAT: £130,000

Phase Two: the windows in the nave largely by Bryans

Preliminary estimate of costs inclusive of VAT: £30,000

Phase Three: the Chancel East window and remaining Hardman windows

Preliminary estimate of costs inclusive of VAT: between £51,000 and £88,000 depending on further investigations into preventing further paint loss on the East window. The extra cost would be for External Protective Glazing (EPG) which would achieve this.

We are applying for grants and, most importantly, looking for support through you. In partnership with the conservators we will be running events, exhibitions, talks on history, conservation, stained glass workshops for all ages to spread the interest and to increase the overall understanding of the windows, their stories and the conservation work involved. Apprenticeship opportunities are also being included in the scheme.

How you can help:

- Support our events and invite friends and family.
- Get involved – contact details are given below.
- Donate to the 6Ps Windows project.
- Sponsor the Rose Window (see the Rose window sponsorship form)

This final stage of the 6Ps will greatly enhance all the work that has been done to make the church light, warm and welcoming for our increasing groups of users: services, concerts and a whole range of community activities. The art in our windows will be lighter, cleaner, more visible and able to be properly appreciated by all who visit the church.

Donation form for the Windows Project

The 6Ps appeal: Protecting the Past, Preserving the Present, Planning for Posterity.

Your Details

Name:

Address:

..... Postcode

If you wish to pay by **BACS** here are the details:

Account Name: Parochial Church Council, Minchinhampton

Bank: Lloyds Bank Stroud, **Sort Code:** 30-98-29 **Account Number:** 74313660

I have paid £..... By BACS/ or I enclose a cheque for £.....

By CARD MACHINE:

I have paid £ on this date:at this time using the card machine in the church THE DATE AND TIME MUST BE GIVEN

Or via **JustGiving**® You can donate via our JustGiving Page at justgiving.com/holytrinity-minchinhampton or by using this QR Code



Reclaim Gift Aid *giftaid it*

Add 25% more to your donation at no cost to you. A Gift Aid declaration allows Holy Trinity Church to claim tax back on eligible donations. It means that for every £1 you donate to the church we can claim back 25p, at no extra cost to you

☐ Yes, I confirm I am a UK taxpayer and would like all my donations to Holy Trinity church made now, in the past four years and in the future to be treated as Gift Aid donations

☐ No, I am unable to Gift Aid my donation

Signature:

Date:

In accordance with the General Data Protection Regulations 2018(GDPR), the information provided on the form will be used only by the Holy Trinity Church Minchinhampton and those processing your donation through His Majesty's Revenue and Customs.

Send completed forms and your donation (unless paid by BACS) to Holy Trinity Church Office, Butt Street, Minchinhampton Glos GL6 9JP. Tel. 01453 889004

Email: admin@minchchurch.org.uk. Please mark your envelope 6PsFund – Stained Glass Windows. You can also use the white envelopes that you can find at the back of the church.

If you have any queries, please contact David Thackray, dthackray8@gmail.com or 07971233282.